

CUSTOMER:

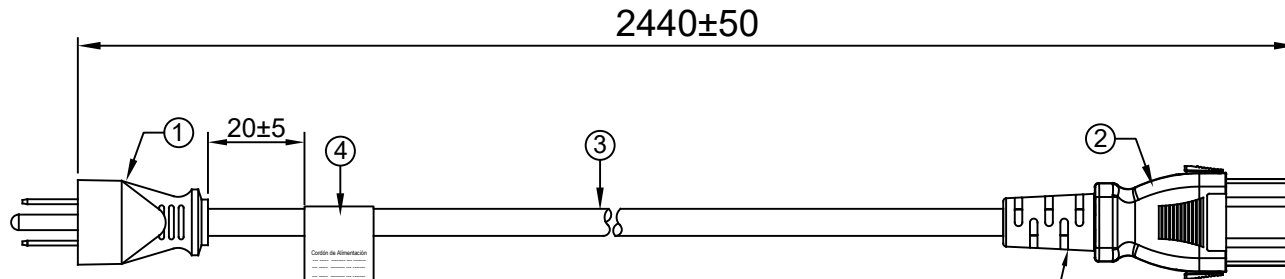
P/N: 5040.096AL

REV.

APPROVED BY:

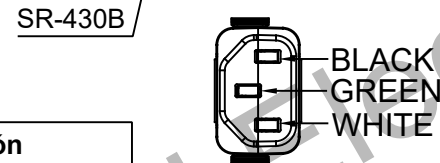
REVISIONS

REV.	DESCRIPTION	DATE
△1		2015/01/14
△2		2015/05/21
△3		2018/12/17
△4		2019/04/19
△5	Add NOM safety regulations at the head and tail, add online labels and remarks 2	2021/04/27

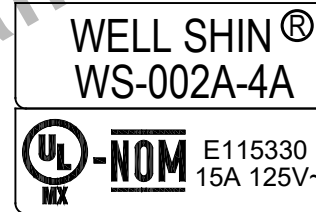


NOTES:

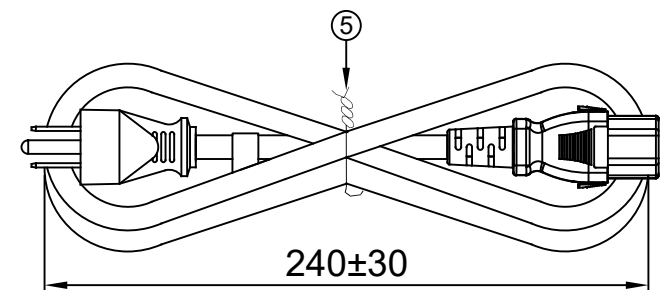
- The outer box must be marked with RoHS (RoHS shown on the carton)
- For online label specs, please refer to 0096-0001-1 REV B (inline label please refer to 0096-0001-1 REV B) For outer box label specs, please refer to 0096-0001-2 REV B (label on carton please refer to 0096-0001-2 REV B)



MARKING: △

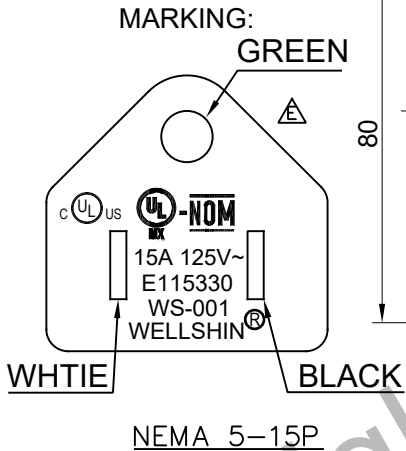


IEC-60320-C13
AUTO-LOCK

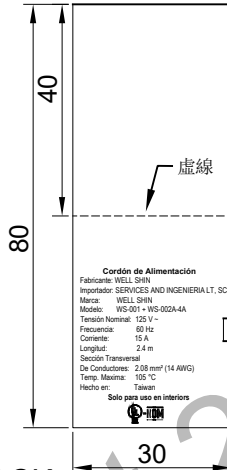


LABEL content :

Cordón de Alimentación
 Fabricante: WELL SHIN
 Importador: SERVICES AND INGENIERIA LT, SC
 Marca: WELL SHIN
 Modelo: WS-001 + WS-002A-4A
 Tensión Nominal: 125 V ~
 Frecuencia: 60 Hz
 Corriente: 15 A
 Longitud: 2.4 m
 Sección Transversal
 De Conductores: 2.08 mm² (14 AWG)
 Temp. Maxima: 105 °C
 Hecho en: Taiwan
Solo para uso en interiors



LABEL



ITEM	DESCRIPTION	COLOR	Q'TY
⑤	Cable tie	BLACK	1
④	LABEL △	---	1
③	SJTW 14AWG*3C 105°C APPROVAL :UL,CSA	BLACK	1
②	WS-002A-4A 15 (A) 125(V) APPROVAL :UL,CUL,NOM	BLACK	1
①	WS-001 15 (A) 125(V) APPROVAL :UL,CUL,NOM	BLACK	1

SAFETY ENGINEER: MANAGER BY: CHECKED BY: DRAWN BY:	SIGNATURE	 QUAIL ELECTRONICS, INC.® http://www.quail.com	
	PRODUCT NO.: 001+002A-4A		
	UNIT: mm	SHEET: 1 OF 1	REV.
	DWG NO: 0096-4741		E