

4-POINT ADJUSTABLE SHELF



The Kendall Howard 4-Point Adjustable Rack Shelf is the perfect addition to any 4-post rack or cabinet. The split design allows the shelf depth to be adjusted from 22" to 40". Save yourself the time and frustration of trying to find a rack shelf to fit a specific depth, and let this versatile solution meet all your shelving needs.

FEATURES

Adjustable Depth - Telescoping rack shelf is comprised of two separate sections. The two sections can be slid in and out to the desired depth and secured with included hardware. (mounting rack screws and cage nuts sold separately)

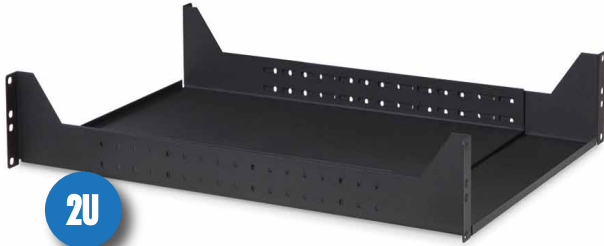
4-Point Mounting - Adjustable depth shelf is designed to be mounted to the front and rear rack rails. This 4-point mounting is highly recommended for supporting large, heavy devices such as servers, battery back-ups, and UPS's.

Heavy Duty - Made from heavy gauge steel and finished with a black textured powder coat for a quality shelf that can support up to 250lbs.

Rounded Corners - Rounded corners reduce the risk of damage from sharp edges to your devices, cabling and/or hands.

Optional Ventilation - Vented base prevents hot spots and allows air to freely circulate throughout the rack or cabinet.

SPECIFICATIONS



Size	2U 4-Point Adjustable Shelf
Part Number	1906-3-006-02
Width	19"
Depth	Adjustable: 22" - 40"
Height	3.47"
Material(s)	CRS (Cold Rolled Steel)
Finish/Color	Black Powder Coat Finish
UPC	879447000276
Warranty	Limited Lifetime Warranty
Shipping Method	FedEx Ground



Size	1U 4-Point Adjustable Shelf
Part Number	1906-3-007-01
Width	19"
Depth	Adjustable: 22" - 40"
Height	1.72"
Material(s)	CRS (Cold Rolled Steel)
Finish/Color	Black Powder Coat Finish
UPC	879447002027
Warranty	Limited Lifetime Warranty
Shipping Method	FedEx Ground



Size	1U Vented 4-Point Adjustable Shelf
Part Number	1906-3-008-01
Width	19"
Depth	Adjustable: 22"-36"
Height	1.72"
Material(s)	CRS (Cold Rolled Steel)
Finish/Color	Black Powder Coat Finish
UPC	879447001150
Warranty	Limited Lifetime Warranty
Shipping Method	FedEx Ground