



Quality Products. Service Excellence.

Horizontal Hinged Cable Manager *PCMDD Series*

Features:



- Constructed in 16-gauge steel.
- Continuous hinged door with magnetic closure strip.
- Four oblong openings (3.5" x 1.56") top & bottom - allowing for cable exit top and/or bottom.
- Openings in the rear for cable entry.
- Designed to fit standard 19" rails.
- Requires mounting hardware.
- Finished in textured RAL9005 black powder paint finish.
- TAA-compliant for GSA Schedule purchases.
- RoHS and REACH compliant.
- Manufactured in North America.

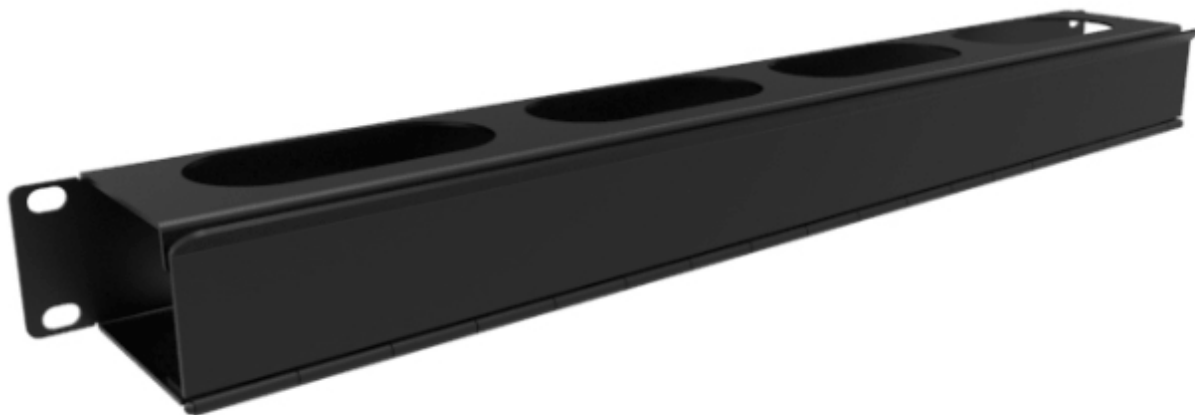


Gallery



Accessories

- Mounting Hardware



Part No.	Overall Dimensions			Rack Units	Usable Dimensions			Similar Size Part No.
	Height	Width	Depth		Height	Width	Depth	
PCMDD19001BK1	1.72	19.00	2.71	1U	1.25	17.62	2.50	RB-HFM1
PCMDD19003BK1	3.47	19.00	2.71	2U	3.00	17.62	2.50	RB-HFM2
PCMDD19005BK1	5.22	19.00	2.71	3U	4.75	17.62	2.50	RB-HFMD3

Estimated Cable Fill Capacities

Rack Units	Description	Opening Quantity	Recommended Cable Fill (50% Fill Ratio)		Maximum Cable Fill (100% Fill Ratio)	
			Cat 6a		Cat 6a	
1U	Channel Opening	1	15		30	
	Top/Bottom Opening	2 x 4 = 8	19		38	
	Rear Pass Through	0	n/a		n/a	
2U	Channel Opening	1	30		61	
	Top/Bottom Opening	2 x 4 = 8	19		38	
	Rear Pass Through	4	14		28	
3U	Channel Opening	1	46		92	
	Top/Bottom Opening	2 x 4 = 8	19		38	
	Rear Pass Through	4	14		28	

Cable fill capacity will vary based on the cable manufacturer.

Data subject to change without notice

© 2022. Hammond Manufacturing Ltd. All rights reserved.